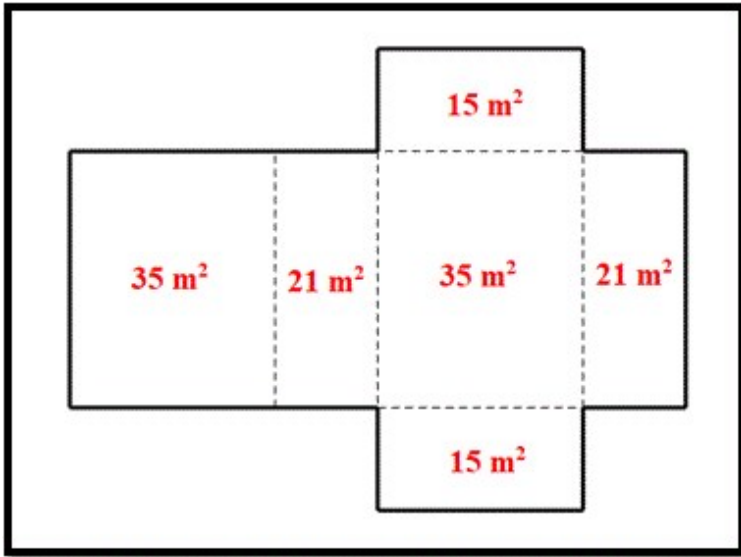


HW #5 HONORS

DUE 10/8

1. The net of a rectangular prism is shown below. The surface area of each face is labeled.

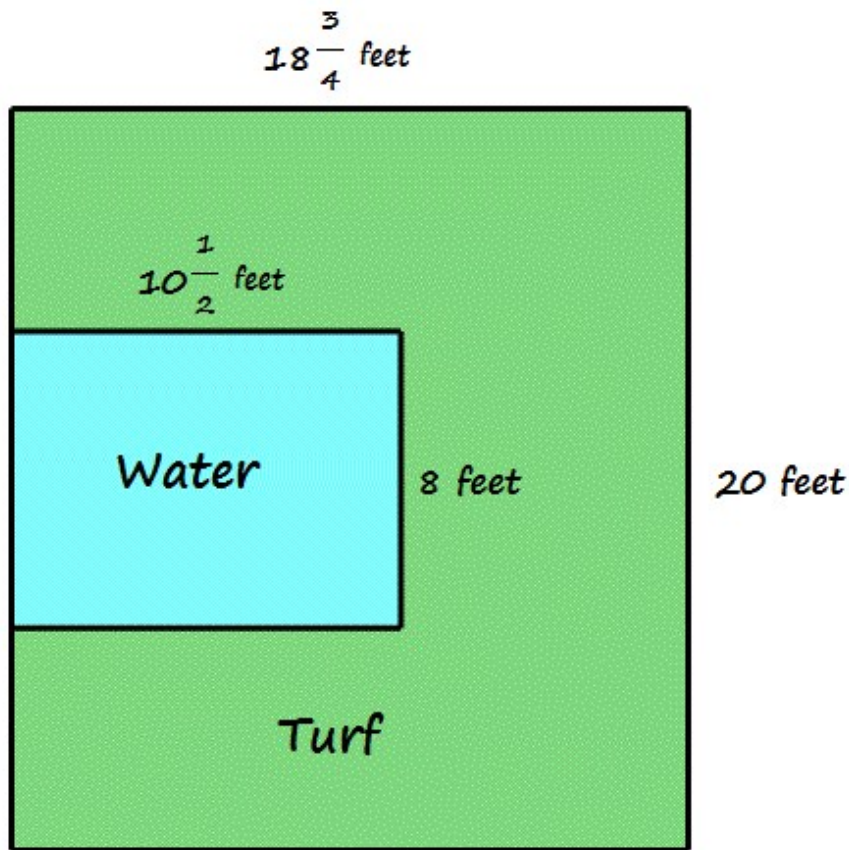


Which values represent the dimensions, in meters, of the rectangular prism?

- A. 3, 5, 7
- B. 3, 4, 5
- C. 5, 7, 9
- D. 15, 21, 35

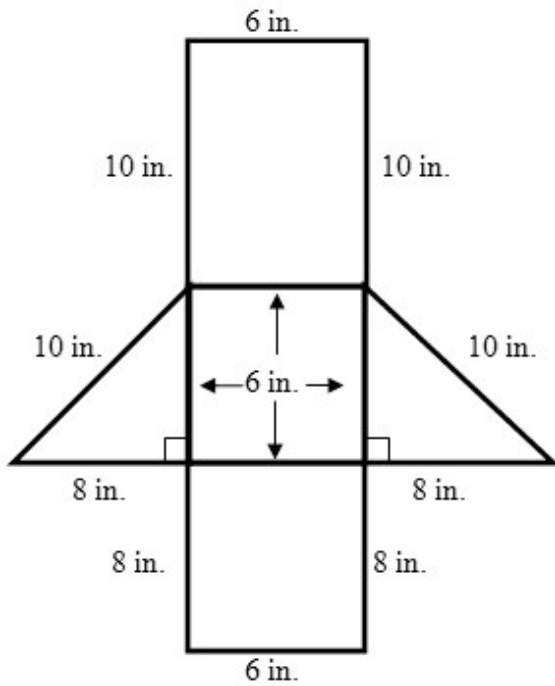
2.

A new miniature golf course is being built in town. The aerial view of the 8th hole is shown below:



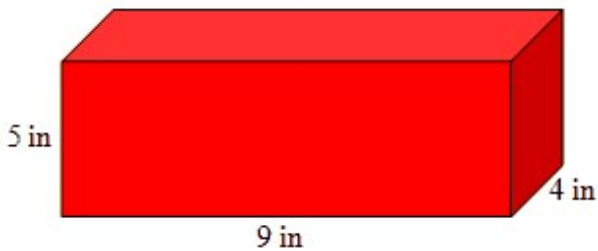
How much turf is needed for the 8th hole? Justify your answer.

3. Find the surface area of the net.



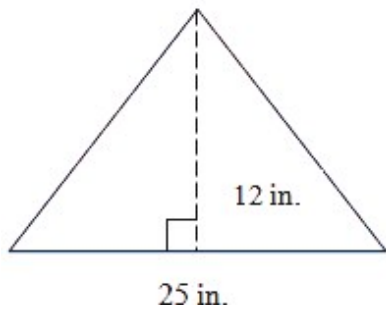
- A. 188 in.^2
- B. 192 in.^2
- C. 224 in.^2
- D. 240 in.^2

4. Find the surface area of the prism.



- A. 202 in.^2
- B. 180 in.^2
- C. 98 in.^2
- D. 360 in.^2

5. Find the area of the triangle.



- A. 300 in.^2
- B. 150 in.^2
- C. 37 in.^2
- D. 87 in.^2

6.

Type all the factors of 48.

7. Cans of soda come in cases of 12. Richard knows that he has only full cases of soda, and that he has less than 100 cans total. Which numbers below could be the number of cans of soda that Richard has?

- 17
- 28
- 36
- 49
- 84
- 108

8.

What is the prime factorization of 92?

9.
What is the prime factorization of 64?